

INTEGRATED SCHOOL Daily Bulletin

LIVING OUT THE LASALLIAN VALUES



SY 2020-2021 | Wednesday, August 26, 2020 | No. 6

Attribute for the month: *Pride in the Filipino Heritage*

Bible Verse for the Day:

Be very careful, then, how you live—not as unwise but as wise, making the most of every opportunity, because the days are evil.
—Ephesians 5:15-16

Reflection:

What strategy do you use to recognize what might trip you up spiritually? What role do you think other believers play in identifying and resisting spiritual hazards? How might thanksgiving be an important part of avoiding spiritual pitfalls?

source: <https://odb.org/2020/08/26/spiritual-driving>

Join us: We're shiftED

The University of St. La Salle - Basic Education (Integrated School and Liceo De La Salle - Senior High School) presents to you **shiftED: School-Home Integration for Flexible and Tech-Enhanced Education**, the new curriculum and instructional program of the Basic Education Unit this School Year 2020-2021.

FOR UPDATES AND ANNOUNCEMENTS
FOLLOW US ONLINE

@uslsBED

FACEBOOK • TWITTER • INSTAGRAM



for general inquiries/feedback/suggestions

E-Mail:

bed@usls.edu.ph

The shift to online learning is new for many of us, thank you for your patience and support. Your feedback will help us better our programs and services.

Please click link in the caption to answer a short survey:

<https://forms.gle/51zMo3zrZvU3gGcRA>

DATES TO REMEMBER

August 24-28	Week 1 – Quarter 1
August 31	National Heroes Day (VCA Memo No. 14 – Declared Holidays)
Sept 28 - Oct 2	Week 6 - Quarter 1 Catch up Week
October 5	World Teachers’ Day
October 6-9	Week 7 – Quarter 1-QUARTERLY SUMMATIVE ASSESSMENTS
October 12-16	Week 8 – Quarter 1 – Quarterly PEFORMANCE TASKS WEEK

INTEGRATED SCHOOL

LICEO-DE LA SALLE
SENIOR HIGH SCHOOL

POWERED BY: canvas

FROM THE HEALTH SERVICES CENTER HEALTH REMINDER NO. 12

SYMPTOMS OF CORONAVIRUS
(COVID-19)

Know the symptoms of COVID-19, which can include the following:

Cough, shortness of breath, or difficulty breathing

Fever or chills

Muscle or body aches

Vomiting or diarrhea

New loss of taste or smell

[cdc.gov/coronavirus](https://www.cdc.gov/coronavirus)

If you experience any of the above symptoms, **PLEASE STAY AT HOME**. You are **NOT ALLOWED** to enter the campus and the Clinic will not do face-to-face check-up for respiratory cases. You may contact the clinic (434-6219 or 432-1187 local 107) for online consult and other concerns.

May we also request everyone to please **BE HONEST** in filling up the Employee Monitoring Sheet located at the gates of the campus.

Stay safe. Together we can beat COVID-19.

UNIVERSITY OF ST. LA SALLE

MISSION STATEMENT



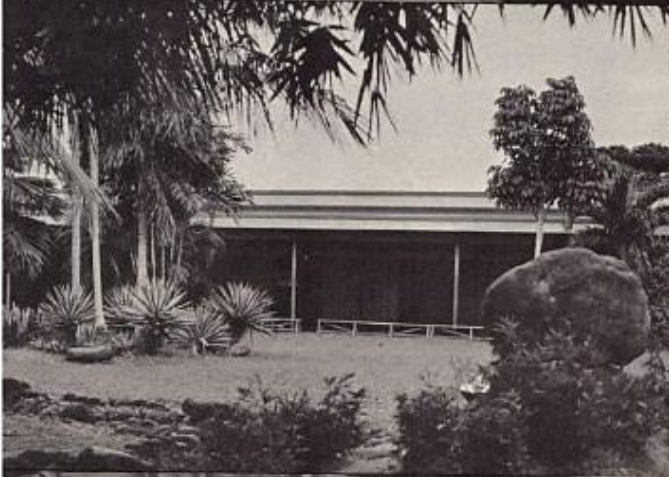
True to our Catholic tradition and inspired by St. John Baptist De La Salle, the University of St. La Salle is a learning community that forms persons of integrity committed to the care of peoples and the earth in shared mission.

FROM MUSEO DE LA SALLE BACOLOD

MEMORIES FROM THE LASALLIANA ARCHIVES



WE DON'T REMEMBER
THE DAYS. WE
REMEMBER THE
MOMENTS.
CESARE PAVESE



...and

